

BLUE OCEAN S-VDR

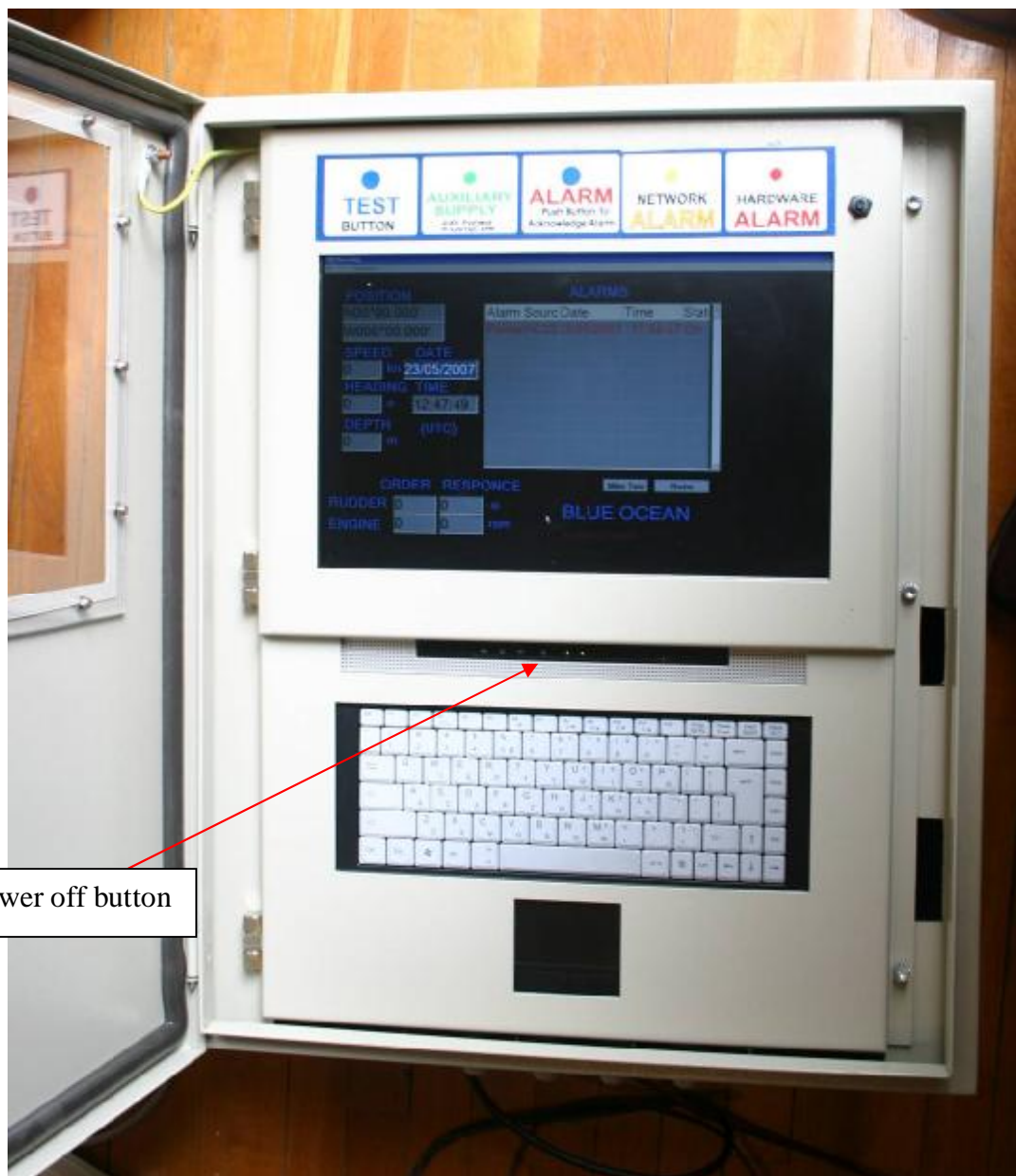
User's Manual Normal Operation

Purpose

The purpose of this manual is to explain the basic functionality of the **BlueOcean System** for the standard user. Please keep a copy of this manual at the bridge.

Front Panel

In normal operation the BlueOcean SVDR is working closed without access to the keyboard and the mouse pad, and with all covers closed. A key is provided to open the front glass door. These keys should be handed over to the officer on duty and are used to reset the audible malfunction alarm and for alarm lamp test. The second level of access needs the use of the keyboard and the mouse, used in adjustments and servicing. Only trained personnel should use these facilities. The button under the cover, in the middle, is the emergency "power off" of the main unit and should be used only for servicing the unit.



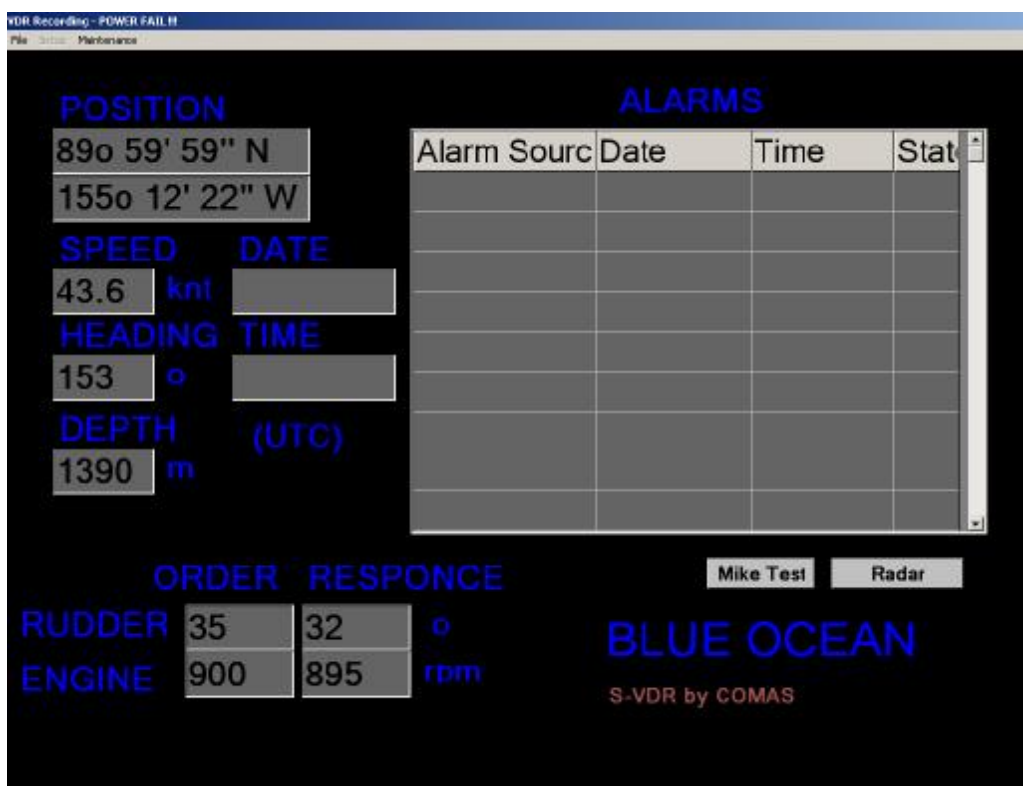
Front View of the Rack

1. Monitor : On the top side of the front panel there is a 15 inch monitor on which are displayed the mandatory recorded items and the alarms. All text is well-sized so it

may be clearly read from a 2m distance. There are also two command buttons drawn on the display called "Radar", "Mike Test". The first one toggles the radar image on a separate window on and off. The second one performs a microphone test to ensure that all the system microphones are operating properly. If the test passes the button is drawn green and if the test for some reason fails the button will be drawn red.

The main window displays the basic ship properties as they are currently being recorded by the ship sensors and electronic equipment. If any of these values is Null then the corresponding source is out of order or it is not connected properly to the system.

Note The displayed Date and Time are taken from a reliable on-line time/date source such as the GPS. In case that this device is currently not available the system will display the time/date from its own clock.



Picture 1.1. BlueBox main window

On the right up side of the monitor there is a dimming knob that controls the brightness of the monitor. Turning it anti-clockwise it will dim the monitor display to allow safe night-time operation

2. Button Panel. The BlueOcean SVDR has a comprehensive alarm structure. We speak here about the alarms that the unit generates because of internal malfunctions, not the alarms that come from the ship.

Over the control unit there are 3 buttons/lamps:

- the green is the "auxiliary power on". It is lit when the 24V come from ship's auxiliary power. If it is off, the system relies only on ship's 220V ac.
- the red is the main control unit "malfunction alarm". The alarm is activated if the main unit stops its normal operation for more than 30 seconds or if a power supply fails. In these cases an audible alarm is sounded and the red lamp is on. When the red button is pressed it resets the audible alarm.

To restart the main unit: Press the "power off" button for 6 seconds, wait 2 seconds and press again. The main unit will restart.

- The third, yellow lamp, similar with the others, is the secondary alarm: when is lit there is a non-fatal problem.

The lamps are tested by pressing the "Test" button.

The alarm indicators are protected by the first level keys of the case. Only the officer on duty should have these keys and be allowed to reset an alarm.

The table labelled "ALARMS" is for informative purposes only. No action is necessary. If the word "NMEA" appears at the left side in orange or red for more than 2 minutes please contact service.

3. Main Unit :

The keyboard and the mouse are for setup and maintenance only and are not needed in normal operation.

4. Night Operation : SVDR equipment is likely to be fitted in places which need to have low levels of ambient lighting, namely in the bridge. Adequate adjustable illumination is provided in the equipment to enable identification of controls and facilitate reading of indicators at all times. For the dimming the output of the screen a potentiometer is provided at the lower right corner of the screen so that the light of the screen will be adjusted in order not to interfere with navigation.

An external adjustable illumination is required as described in installation manual.

The illumination is adjustable to extinction, except from warning and alarm indicators on screen, which are illuminated in the warning/alarm condition.

There are not indicators required for switching on/off or resetting the equipment: The SVDR must be constantly on and is self-resetting, if a reset, due to a malfunction, is needed. The alarm indicators ("distress alerting") are clearly visible in all appropriate conditions of ambient illumination.

Note It is not recommended to do maintenance or testing of the equipment under bad lighting conditions. Particularly, the officers are clearly and positively warned NOT to allow service or repair of the equipment under bad lighting conditions: line voltages of 110-220V are present which could be lethal if not appropriately handled.
